



**MOTOROLA SOLUTIONS**

# VB400 PLASTICS REFRESH GUIDE

## HOW TO REFRESH A VB400'S PLASTICS IN THE FIELD

# CONTENTS

<b>INTRODUCTION</b>	<b>3</b>
<b>REMOVE THE BACKPLATE</b>	<b>3</b>
<b>REMOVE THE BATTERY TRAY &amp; BATTERY</b>	<b>4</b>
<b>EXTRACT THE CIRCUIT BOARD</b>	<b>6</b>
<b>REPLACE THE VB400'S FRONT CASING</b>	<b>7</b>
<b>REPLACE THE BATTERY TRAY &amp; BATTERY</b>	<b>9</b>
<b>REPLACE THE BACKPLATE</b>	<b>10</b>
<b>TEST THE VB400</b>	<b>10</b>

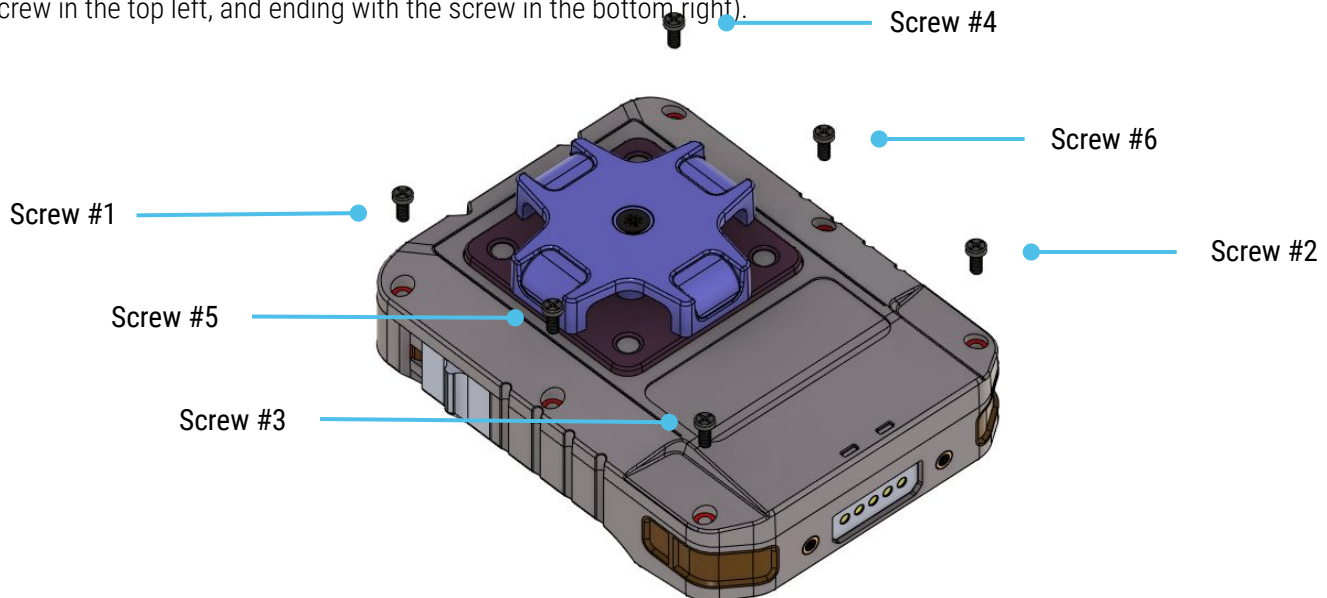
# INTRODUCTION

This document will walk you through refreshing a VB400's plastics. This replaces the outer casing of a VB400, but **does not replace the battery or circuit board**. Before you begin, please ensure you have the following equipment in front of you:

- 1 x VB400
- 1 x VB400 solo dock, connected to a PC running VideoManager
- **FRU/P/0999** - 1 x rear cover
- **FRU/P/0959** - 1 x front case
- **FRU/P/0905** - 1 x slide switch
- **FRU/P/1032** - 2 x new microphone boot
- **FRU/P/1003** (SCREW M2x6 Mach PH-PHIL PIST- BNZP 1000pcs) - 6 x new M2 x 6mm screws (for the VB400's outer casing) required
- **FRU/P/0917** (SCREW M1-7x7 Stap PH-PHIL PIST-BZP 1000pcs) - 4 x new M1.7 x 7mm screws (for the VB400's battery tray) required
- **FRU/P/0918** - 1 x new M1.4 x 3.5mm screw
- 1 x torque set screwdriver PH1 0.4 Nm
- 1 x torque set screwdriver PH1 0.22 Nm
- 1 x torque set screwdriver PH1 0.20 Nm
- 1 x ESD tweezers
- 1 x ESD wrist strap
- 1 x connector extractor or nose pliers

## REMOVE THE BACKPLATE

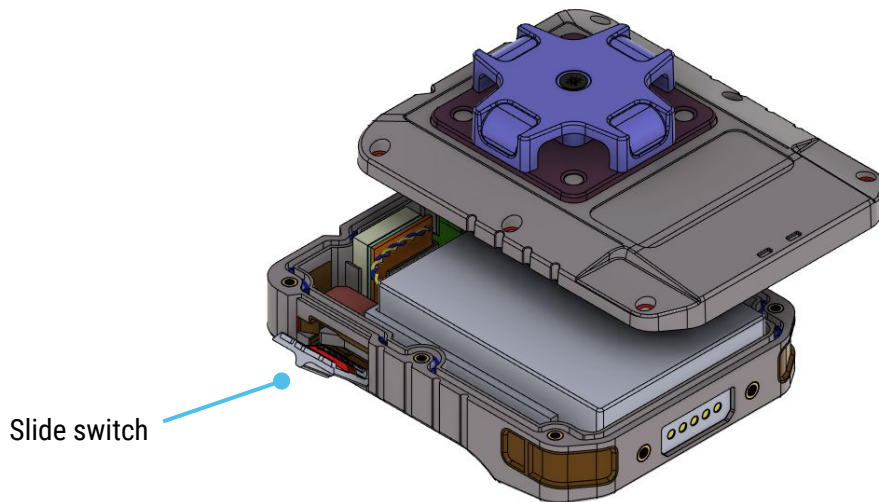
1. Ensure you are wearing the **ESD wrist strap**.
2. Using **screwdriver PH1**, remove the 6 screws from the backplate of the VB400 in a criss-cross fashion (starting with the screw in the top left, and ending with the screw in the bottom right).



2. Lift the VB400's backplate off the device, and set aside.

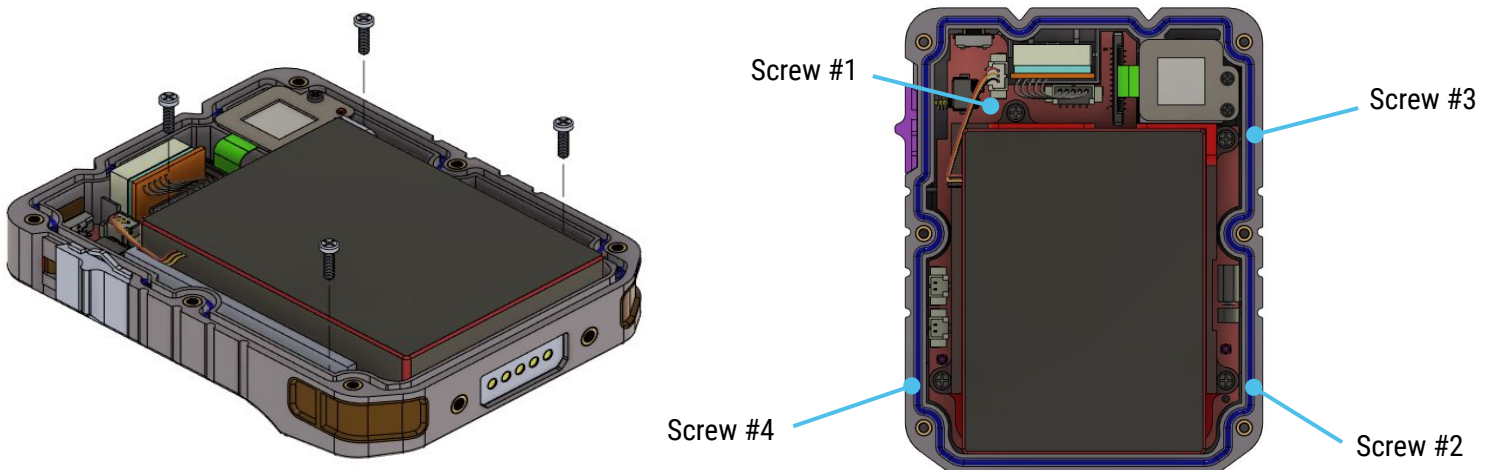


**PLEASE NOTE:** The VB400's slide switch may fall off.



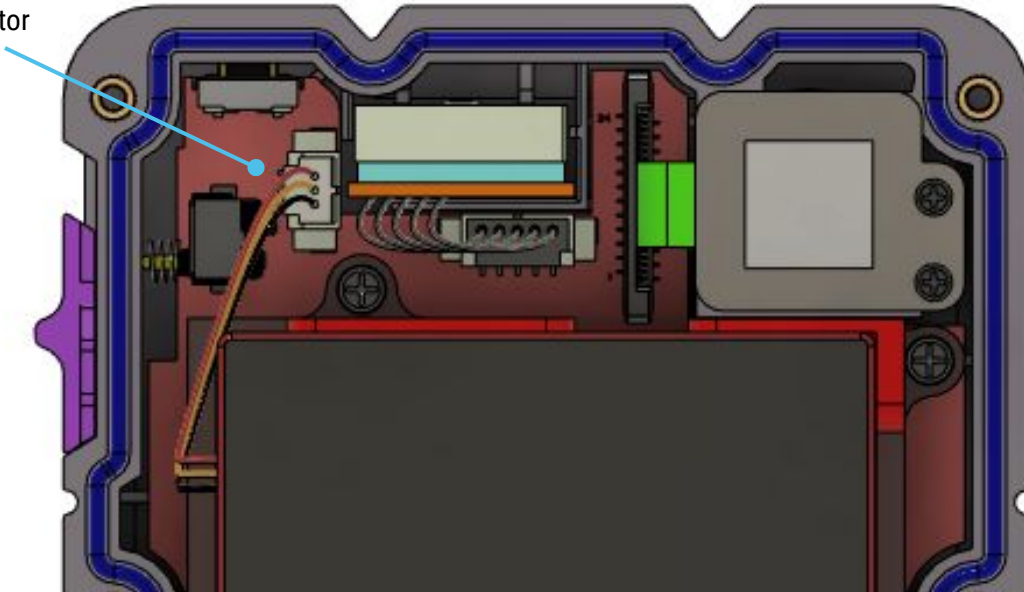
## REMOVE THE BATTERY TRAY & BATTERY

1. Using **screwdriver PH0**, unscrew the 4 screws from the battery tray of the VB400 in a criss-cross fashion (starting with the screw in the top left, and ending with the screw in the bottom right).

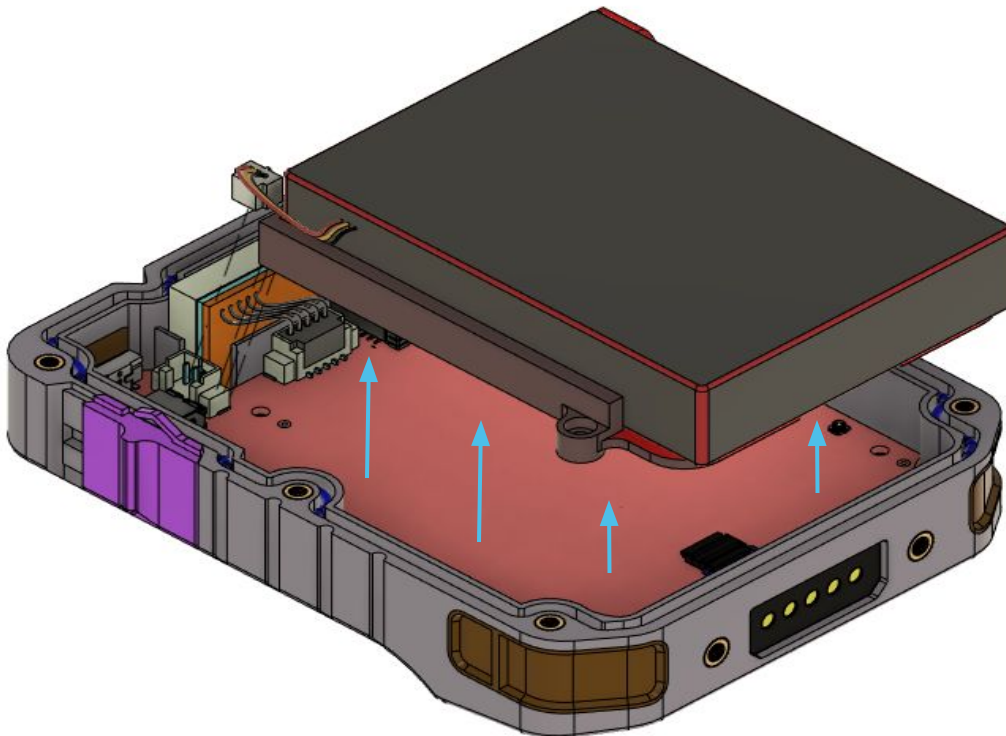


3. Using a **connector extractor** or nose plier, unseat the battery connector by pulling the three connected wires upwards gently.

Battery connector

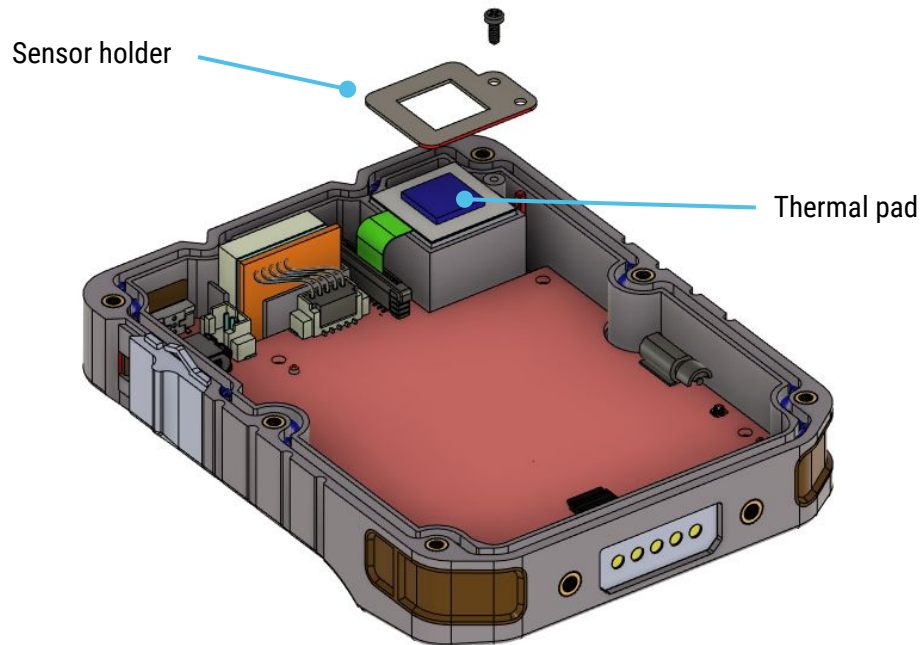


4. Remove the battery and battery tray, and discard both appropriately.

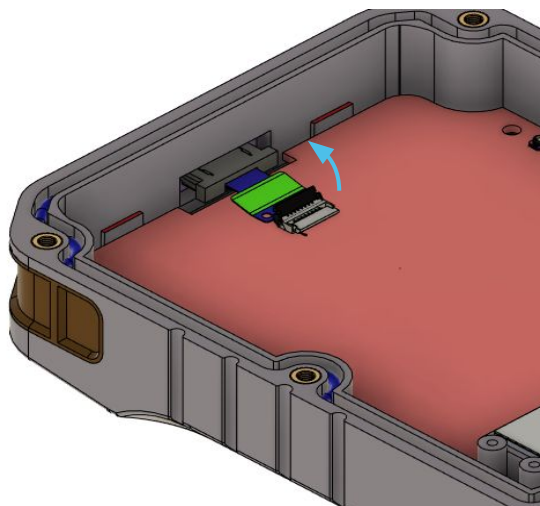


# EXTRACT THE CIRCUIT BOARD

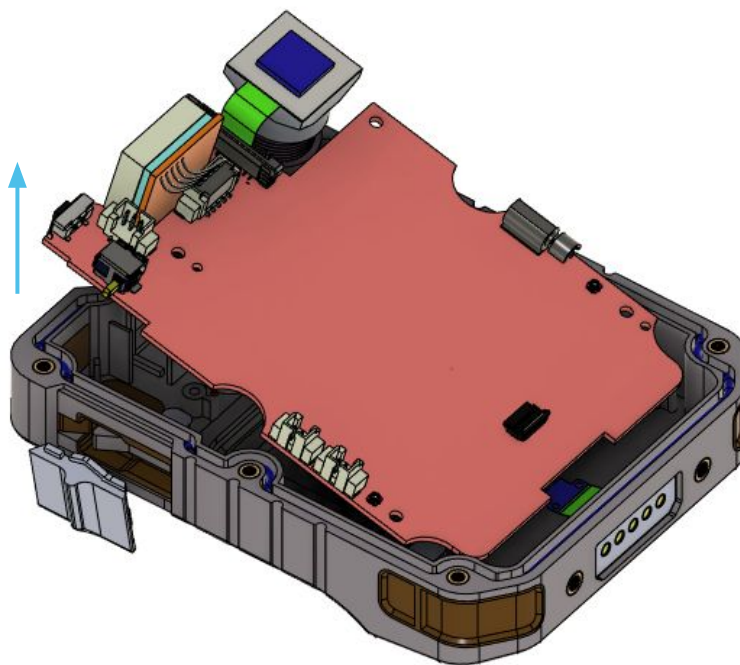
1. Using **screwdriver PH0**, unscrew the M1.4 x 3.5mm screw from the sensor holder of the VB400.
2. Remove the sensor holder, and keep it somewhere safe. Ensure the thermal pad remains in place.



3. Using a **connector extractor** or nose plier, unlatch the board's flat flexible cable at the bottom of the device by pulling it upwards gently.



4. Lift the board up and out of the casing gently.



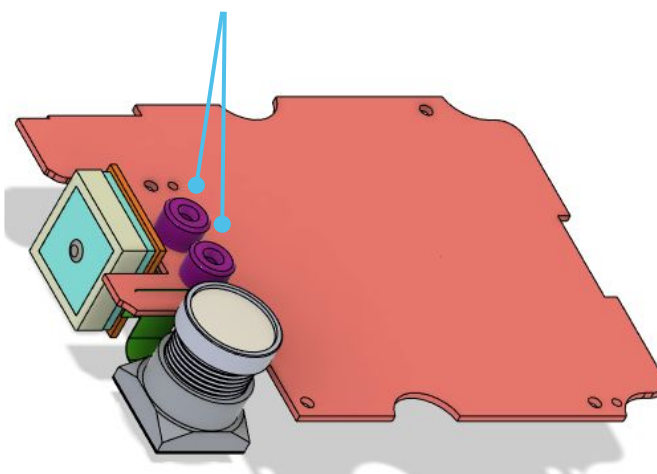
## REPLACE THE VB400'S FRONT CASING

1. Turn the circuit board over. Place the two new **microphone boots** over the VB400's microphones.



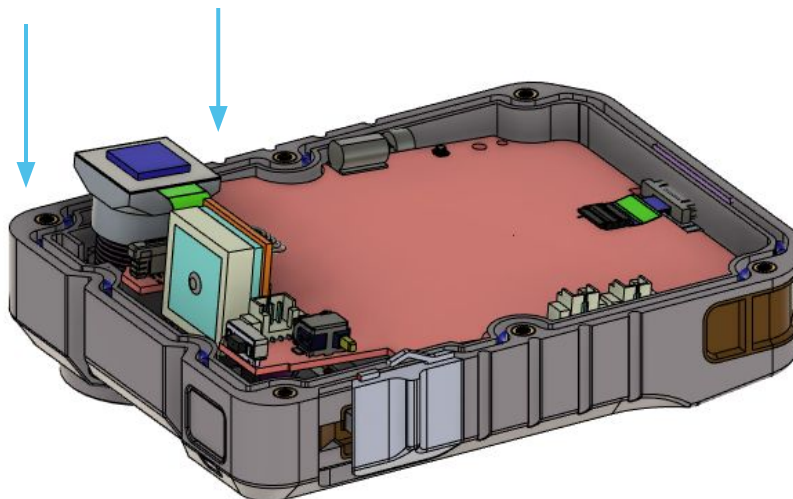
**PLEASE NOTE:** The old microphone boots may have remained in place when the circuit board was removed.

Microphone boots



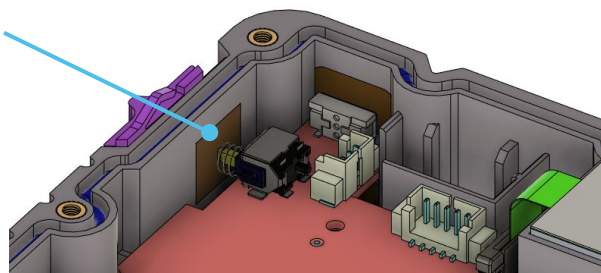


2. Slide the circuit board into the new **front casing**.

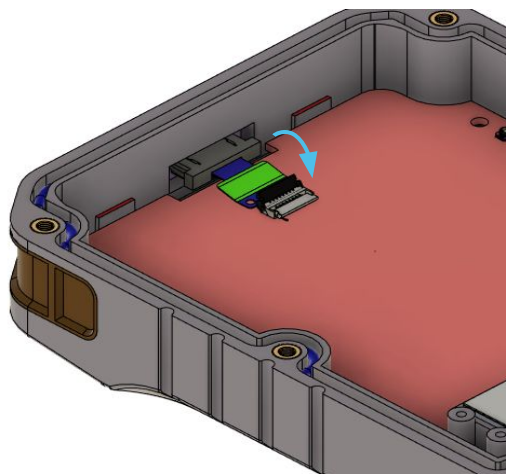


3. Once the circuit board has been inserted, ensure the helical spring is correctly aligned with the slide switch, as shown below:

Helical spring



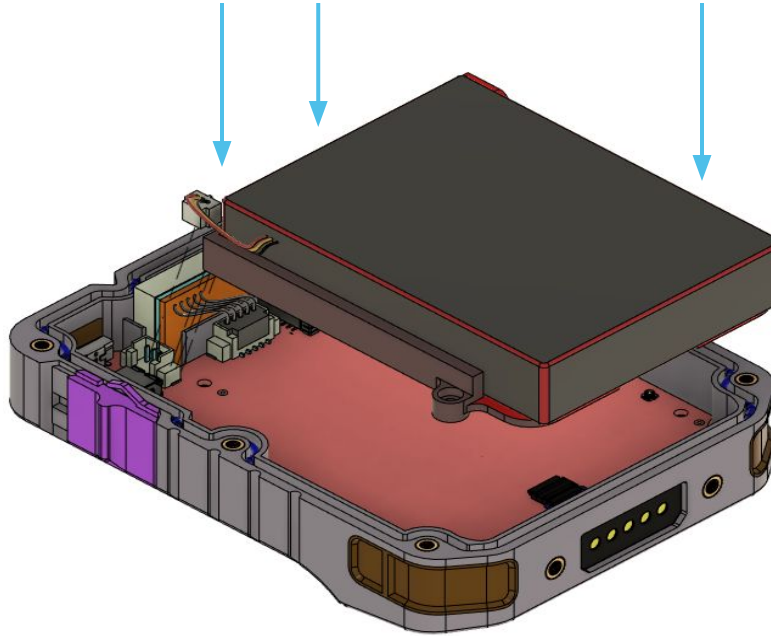
4. Using a **connector extractor** or nose plier, relatch the board's flat flexible cable at the bottom of the device by pushing it downwards gently.





# REPLACE THE BATTERY TRAY & BATTERY

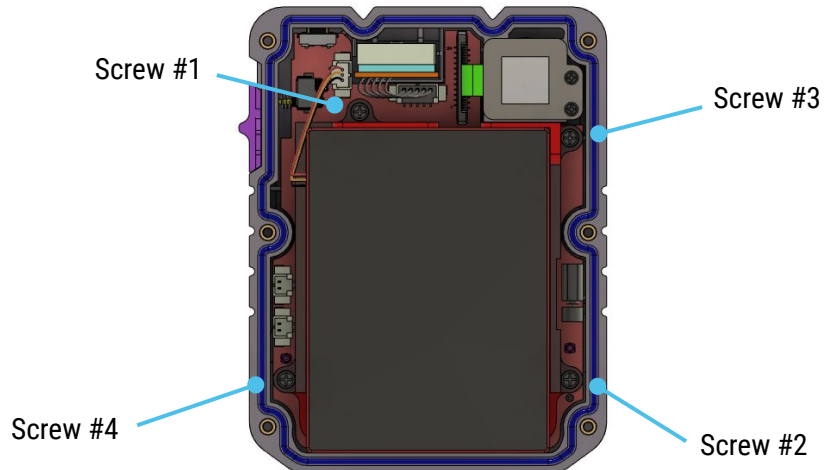
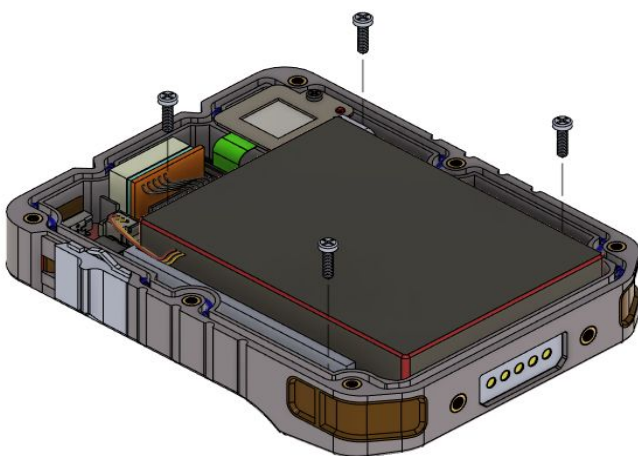
1. Place the battery and battery tray back into the device.



2. Using the **tweezers**, insert the battery connector into its corresponding connector housing.

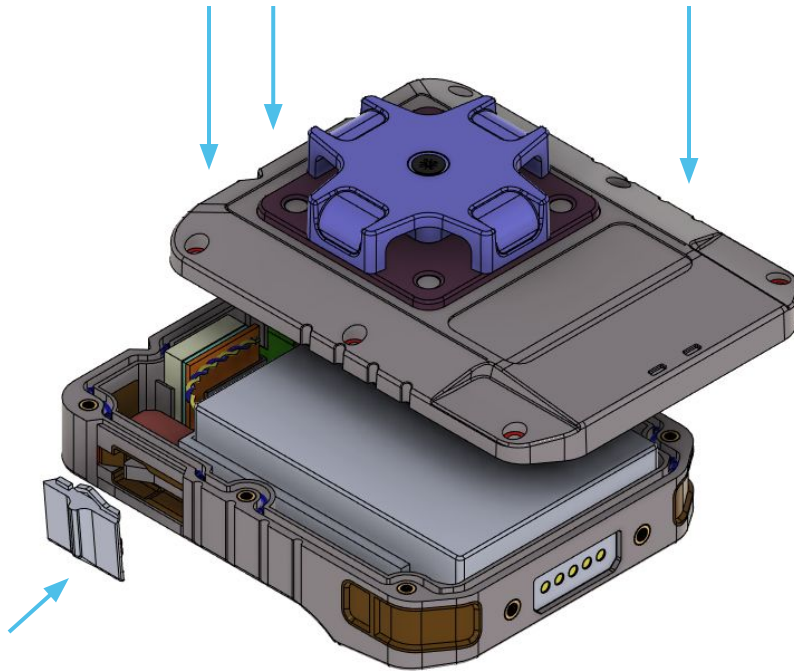
3. Place the 4 new M1.7 x 5mm screws in their corresponding positions on the battery tray.

4. Using **screwdriver PH0**, tighten the screws in a criss-cross fashion (starting with the screw in the top left, and ending with the screw in the bottom right).



# REPLACE THE BACKPLATE

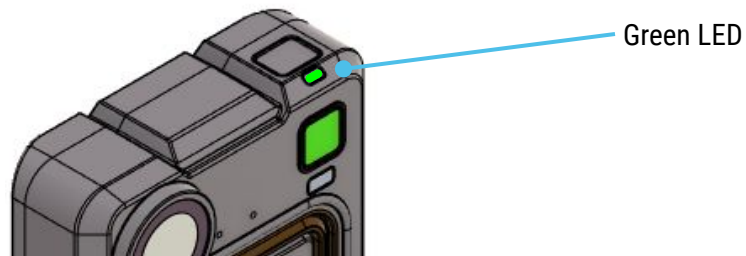
1. Slide the VB400's slider back into its slot on the side of the device.
2. Place the VB400's backplate back on the device.



2. Place the 6 M2 x 6mm screws in their corresponding positions on the device.
3. Using **screwdriver PH1**, tighten the screws in a criss-cross fashion (starting with the screw in the top left, and ending with the screw in the bottom right).

# TEST THE VB400

1. Redock the VB400 in its solo dock. If the plastics refresh has been successful, it will beep and the LED on the top of the device will flash green.





Motorola Solutions, Inc. 500 West Monroe Street, Chicago, IL 60661 U.S.A.

Availability is subject to individual country law and regulations. All specifications shown are typical unless otherwise stated and are subject to change without notice. MOTOROLA, MOTO, MOTOROLA SOLUTIONS and the Stylized M Logo are trademarks or registered trademarks of Motorola Trademark Holdings, LLC and are used under license. All other trademarks are the property of their respective owners.

© 2023 Motorola Solutions, Inc. All rights reserved. 05/2023 [ED-011-011-04]